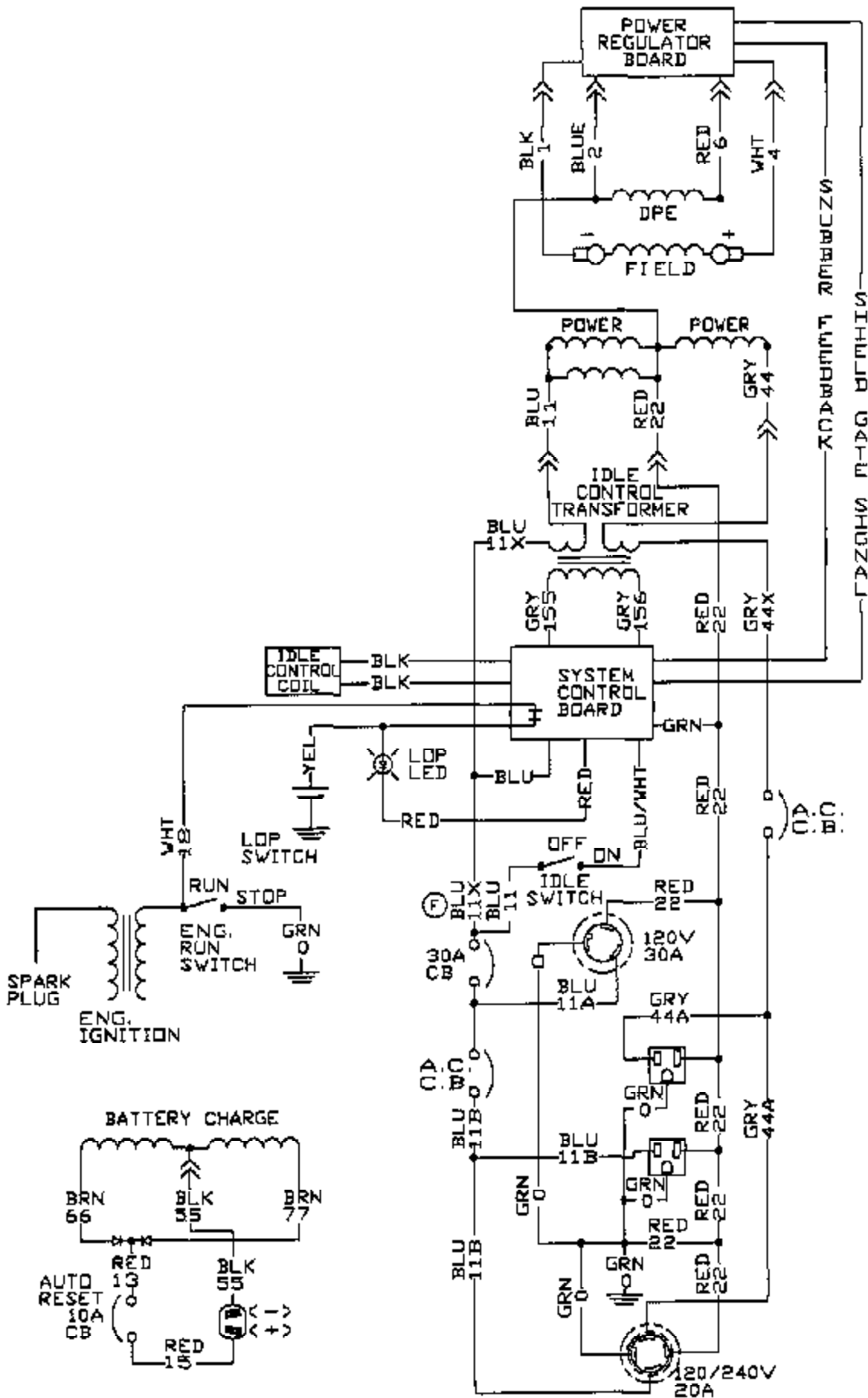
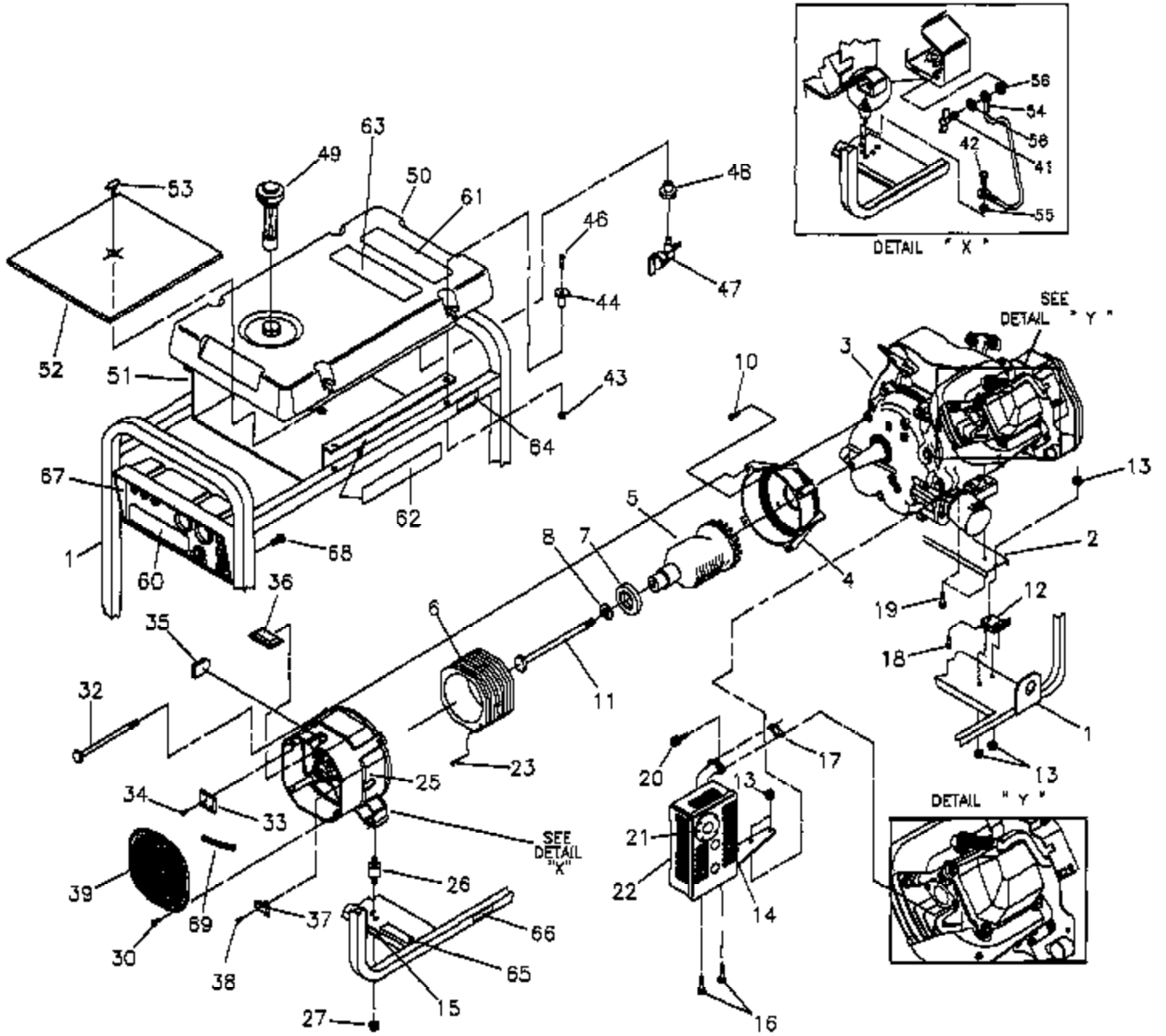


Ref #	Part Number	Qty	Description
1	83976	1	PANEL, Control
2	83975	1	BOX, Control
3	66818	2	OUTLET, 120 Volts AC
4	66821	1	OUTLET, 12 Volts DC
5	68867C	1	OUTLET, 120/240 Volts, 20 Amp Locking
6	68868C	1	OUTLET, 120 Volts, 30 Amp Locking
7	75207A	1	CIRCUIT BREAKER, 30 Amp
8	75207G	2	CIRCUIT BREAKER, 18 Amp
9	82538	1	SWITCH, On/Off Rocker
10	84134	1	GROMMET, Rubber
11	83514	1	CIRCUIT BREAKER, 10 Amp
12	83970	1	CONTROL BOARD, System
13	84028	1	TRANSFORMER, Idle Control
14	67022	1	GROMMET, Rubber
15	85584	1	BAR, Bus
16	84543A	2	SCREW, 3.0 x 12mm
17	84543C	9	SCREW, 3.5 x 18mm
18	84198	3	SHIELD, Circuit Breaker
19	84197	1	BAR, Circuit Breaker Retaining
21	75476	2	SCREW, 4.15 x 16mm
22	22264	4	WASHER, M4 Lock
23	51715	4	NUT, M3 Hex
24	84543B	10	SCREW, 3.5 x 12mm
25	84335	1	WIRE HARNESS
26	82542	1	BAR, DC Outlet Retaining





Ref #	Part Number	Qty	Description
1	A93199	1	CRADLE, XL
2	A84021	1	SUPPORT, Engine
3	~NSP	1	ENGINE
4	66365	1	HOUSING, Engine Adapter
5	84141J	1	ASSEMBLY, Rotor
6	83540J	1	ASSEMBLY, Stator
7	65791	1	BEARING
8	96796	1	WASHER, M8 Flat
10	86307	4	HHMS, 5/16-24 x 3/4
11	47480	1	HHCS, 5/16-24 x 7"
12	84508	2	MOUNT, Vibration 45°.
13	52858	8	NUT, M8 Locking
14	83208	1	BRACKET, Muffler
15	B4986	1	DECAL, Ground
16	66476	2	HHMS, LW M6 1.00 x 12
17	89476	1	GASKET, Exhaust
18	70644	1	PPHMS, M8 1.25 x 20
19	84346	3	PPHMS, M8 x 35
20	40976	2	SHCS, M8 1.25 x 20
21	83083	1	SCREEN, Spark Arrest
22	83071	1	MUFFLER
23	81917	1	PIN, Roll M4 x 10
25	66825B	1	CARRIER, Rear Bearing
26	85652	2	MOUNT, Vibration
27	67989	2	NUT, M8 Flanged Serrated
30	74908	4	TAPTITE, M5-0.8 x 10
32	86308	4	BOLT, M6- 1.0 x 115
33	65795	1	RECTIFIER, Battery Charge
34	66849A	1	TAPTITE, M5 0.8 x 20
35	67022	1	GROMMET, Rubber
36	84132	1	ASSMBLY, Drive Module Pwr Reg.
37	66386	1	ASSEMBLY, Brush Holder
38	66849	2	TAPTITE, M5 0.8 x 16
39	B4871	1	COVER, Bearing Carrier
41	86494	1	SCREW, M6 -1.0 x 16 Wing
42	86292	1	HHCS, 10 - 16 x 3/4" Self Driller
43	77395	4	NUT, M6 Flange Lock
44	83465	4	GROMMET, Tank
46	78831B	4	HHMS, M6 1.0 x 60
47	80270	1	VALVE, Tank
48	78299	1	BUSHING, Plastic Tank
49	85134	1	GAUGE, Fuel
50	88325	1	TANK, Fuel
51	B84042	1	SHIELD, Heat
52	84687	1	INSULATION, #2-1/4" Thick
53	85000	1	CLIP, Insulation
54	14353621	1	WIRE, Ground
55	23762	1	WASHER, Shakeproof #10
56	26850	2	WASHER, M6 Shakeproof
60	B4399	1	DECAL, Control Panel
61	92982	1	DECAL, Danger
62	B4398	2	DECAL, Heat Shield
63	93826	1	DECAL, Operating Instructions
64	73054	1	DECAL, Fuel Shut Off
65	20566	1	DECAL, Generac 1-800
66	77816	1	DECAL, Caution Hot Muffler
67	87116	1	ASSY, Control Panel
68	B2153	4	HHCS, 12 - 14 x 7/8 Self Drill

Ref #	Part Number	Qty	Description
69	84409	1	SLEEVING, Flexo, HW 1/2" x .83 ft.
	37806		120 Volt AC 30 Amp Plug Not Illustrated
	43483		120/240 Volt AC 20 Amp Plug Not Illustrated
	65787		Battery Charge Cable Not Illustrated
	72347		Spark Plug Not Illustrated
	78601		Air Filter Not Illustrated
	84882		Spark Plug Wrench Not Illustrated
	B4400		Owner's Manual Not Illustrated
	B4572		Video Not Illustrated
	BB3061		Oil, 28 oz. Not Illustrated
	~NSP		Engine Owner's Manual Not Illustrated
	84883		Cord Wrap Optional Accessory; Not Included
	84895		Storage Cover Optional Accessory; Not Included

