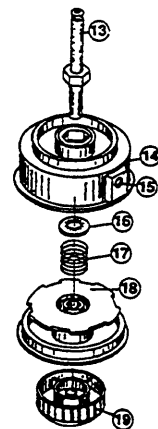
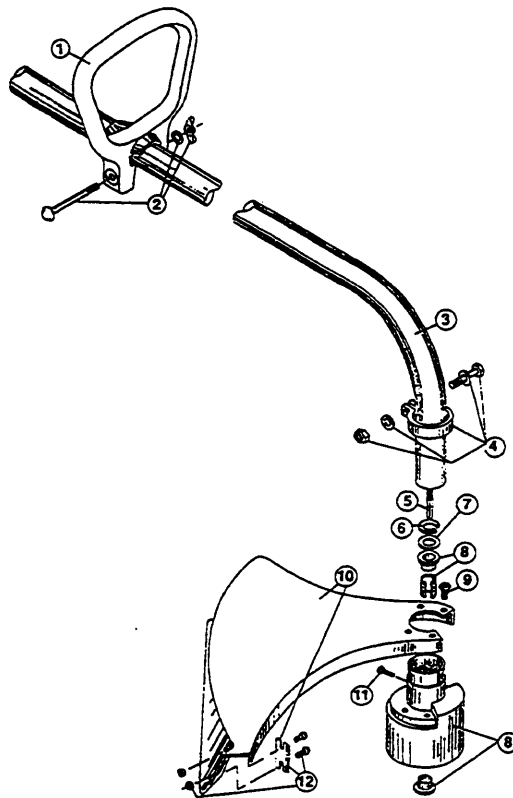


| Item | Part No. | Description |
|------|----------|------------------------|
| 1 | 180300 | Screw Set |
| 2 | 145569 | Anti-Rotation Screw |
| 3 | 180558 | Motor Housing Assembly |
| 4 | 180150 | Switch |
| 5 | 180151 | Trigger |
| 6 | 180559 | Lead Wire |
| 7 | 180305 | Terminal Block |

| Item | Part No. | Description |
|------|----------|-------------|
| 8 | 180152 | Driver |
| 9 | 180153 | Motor |
| 10 | 180155 | Fan |
| 11 | 180156 | Power Cord |

The above part numbers are for serial numbers 210018251 and greater.

BOOM AND TRIMMER PARTS-RYOBI 100r



| <u>Item</u> | <u>Part No.</u> | <u>Description</u> |
|-------------|-----------------|----------------------------------|
| 1 | 145819 | D-Handle |
| 2 | 153523 | D-Handle Hardware Assembly |
| 3 | 180560 | Drive Shaft Housing Assembly |
| 4 | 153597 | Lower Clamp Assembly |
| 5 | 180561 | Flexible Drive Shaft |
| 6 | 145570 | Retaining Ring |
| 7 | 145567 | Washer |
| 8 | 153312 | Bushing Housing Assembly |
| 9 | 180531 | Guard Mounting Screw Assembly |
| 10 | 147593 | Guard and Blade Assembly |
| 11 | 145569 | Anti-Rotation Screw |
| 12 | 682061 | Blade Assembly |
| 13 | 153313 | Spool Shaft |
| 14 | 153619 | Outer Spool and Eyelet Assembly |
| 15 | 145566 | Eyelet |
| 16 | 610660 | Retainer (10 pack) |
| 17 | 610317 | Spring |
| 18 | 153600 | Inner reel |
| 19 | 153066 | Bump Head Knob Assembly |
| * | 180117 | Monofil Cutting Line (50 ft.) |
| * | 180522 | Spool and Line (40 ft.) Assembly |

* not shown